

Highlights

OF THE EXTRA-FINANCIAL PERFORMANCE REPORT



COMMITMENT 1

ACCOMPANY THE CHANGES TOWARDS A SUSTAINABLE AND EFFICIENT AGRICULTURE

In order to form a collective front to face the numerous mutations currently shaking the world of agriculture (demographic growth, climate change, soil depletion, etc.) we are committed to speeding up the development of our production models, in concertation with partners, while at the same time offering innovative, durable, and efficient solutions.

Main challenges:

- #1 Sustainable innovation
- #2 Contributing to the circular economy
- #3 Combating pollution and climate change

COMMITMENT 2

CONTRIBUTING TO THE DEVELOPMENT OF EMPLOYEES AND PARTNERS

Because they provide the Group with the collective energy it needs to progress, we commit to supporting our employees by guaranteeing their safety, well-being and employability. This commitment also applies throughout our value chain, in particular to suppliers, by building new modes of partnership that are both close-knit and long-lasting.

Main challenges:

- #1 Encouraging skills development
- #2 Continuously improving working conditions
- #3 Ethical and sustainable purchasing

COMMITMENT 3

ACTING FOR THE BENEFIT OF OUR OPERATING REGIONS ALONGSIDE OUR CUSTOMERS

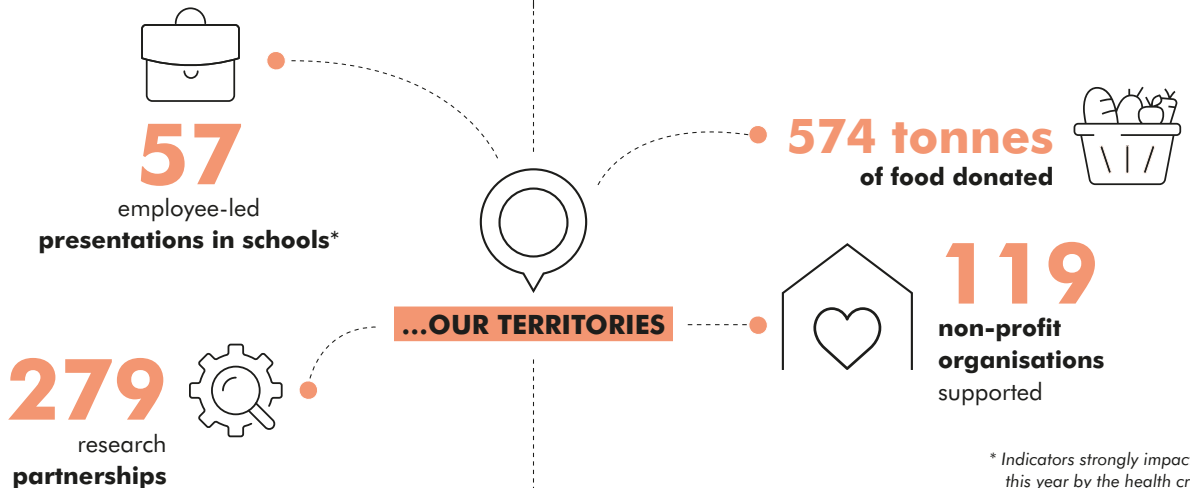
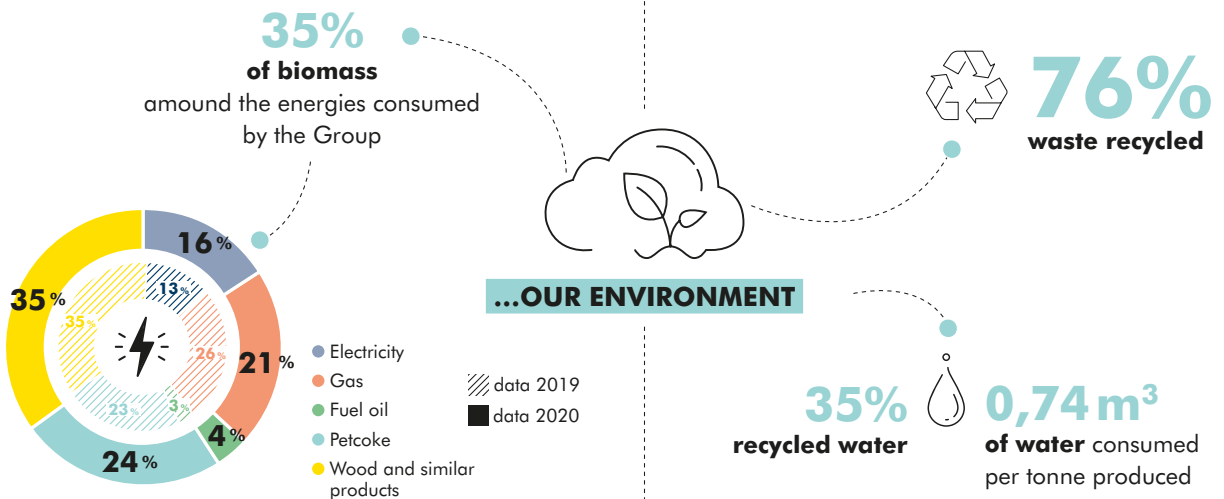
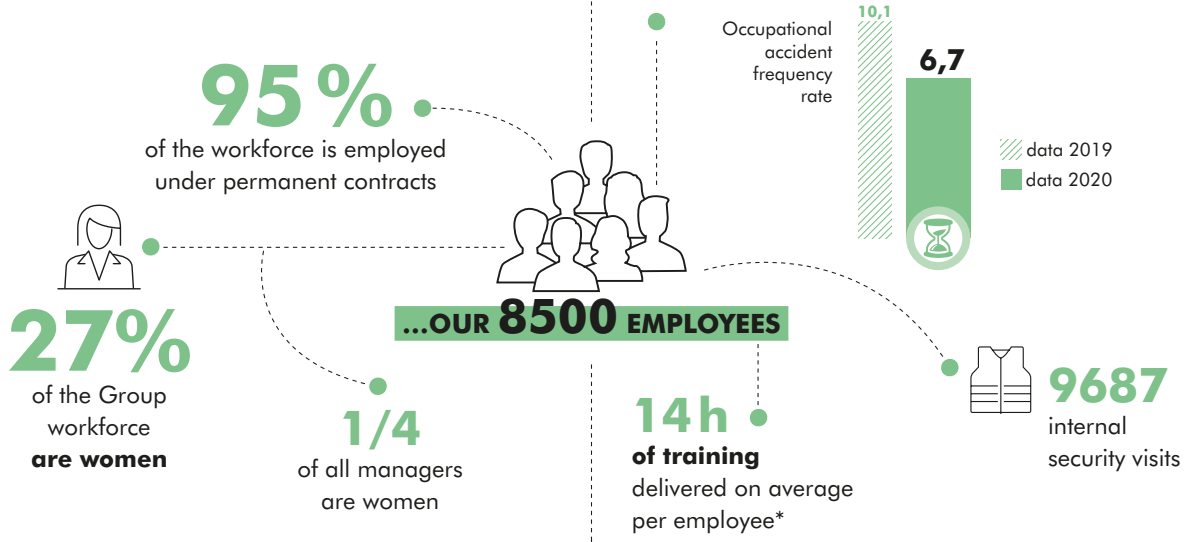
Through our local, national, and international presence, we will seek to foster development in the areas where we're located.

We aspire to contribute in a way that is concrete, transparent, and fulfills our stakeholders' expectations. For our clients, this means a closer relationship and reinforced support on the journey to more sustainable and profitable practices.

Main challenges:

- #1 Helping regions and customers change the way they operate
- #2 Boosting local economies
- #3 Building new models for dialogue and community action

**Through our responsibility initiative,
we are committed to creating value for...**



* Indicators strongly impacted this year by the health crisis
Data for the end of 2020